

Phone: 514-482-5984

Fax: 514-482-3685

sales@splicetronics.com

www.splicetronics.com



Splicetronics Solutions

Splice Tape is used to join component reels and reduce pick & place machine down-time

Advantages:

- Stronger adhesive
- Significant savings on production costs
- Increase pick & place machine output 5%-30%
- Reduce reel change down-time
- Guarantees precise connection of reels
- Decrease machine abrasion by reducing the need to reload the feeder

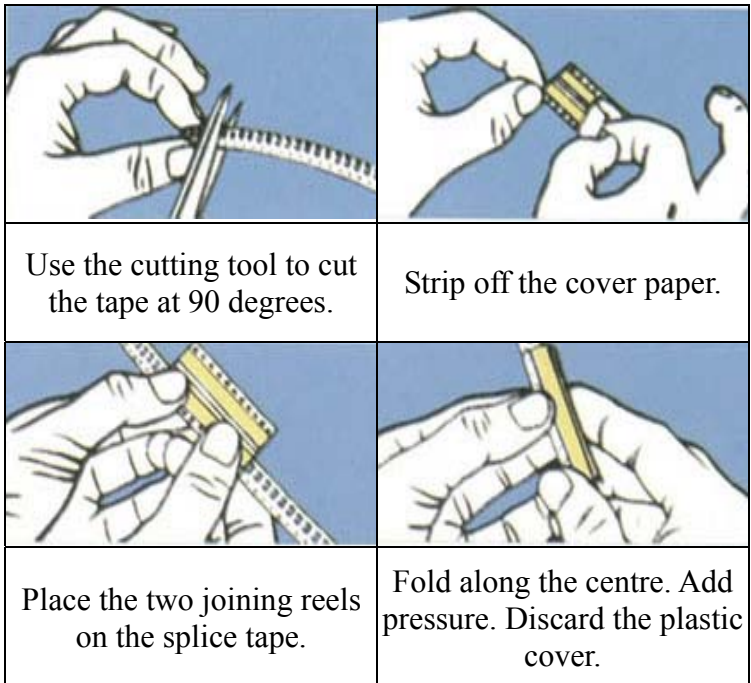
DOUBLE BLUE TAPE



Description:

- Sizes: 8mm, 12mm, 16mm, 24mm
- Strip Strength: $\geq 300\text{N/M}$
- Extending Rate: 55%
- Fire-retardant: 94v-0 class
- Insulating Grade: H
- Insulating Resistance: $>10^6$
- Peel Strength: 16N/25mm
- Tensile Strength: 110 N/25mm
- Resist Voltage: 7KV
- Total Thickness: 0.025mm

Instructions:



P/N	Category	Qty/Unit
DSB08	Double Blue Splice Tape 8mm	500 pcs
DSB12	Double Blue Splice Tape 12mm	500 pcs
DSB16	Double Blue Splice Tape 16mm	500 pcs
DSB24	Double Blue Splice Tape 24mm	500 pcs

Splicetronics Solutions will allow you increase manufacturing productivity and reduce operational costs