

Phone: 1-514-482-5984

1-514-887-9559

Fax: 1-514-482-3685

sales@splicetronics.com

www.splicetronics.com



Splicetronics Solutions

Splice Tape is used to join component reels and reduce pick & place machine down-time

Advantages:

- Necessary for feeders with a special sensor
- Significant savings on production costs
- Increase pick & place machine output 5%-30%
- Reduce reel change down-time
- Guarantees precise connection of component reels
- Decrease machine abrasion by reducing the need to reload the feeder

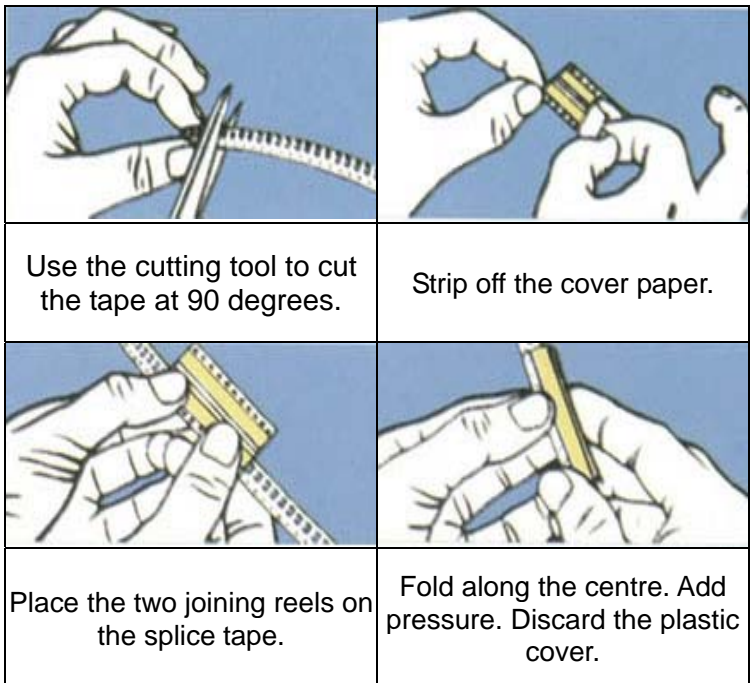
DOUBLE BLACK TAPE



Description:

- Sizes: 8mm, 12mm, 16mm, 24mm
- Strip Strength: $\geq 300\text{N/M}$
- Extending Rate: 55%
- Fire-retardant: 94v-0 class
- Insulating Grade: H
- Insulating Resistance: $>10^6$
- Peel Strength: 16N/25mm
- Tensile Strength: 110 N/25mm
- Resist Voltage: 7KV
- Total Thickness: 0.025mm

Instructions:



P/N	Category	Qty/Unit
DSP08	Double Black Splice Tape 8mm	500 pcs
DSP12	Double Black Splice Tape 12mm	500 pcs
DSP16	Double Black Splice Tape 16mm	500 pcs
DSP24	Double Black Splice Tape 24mm	500 pcs

SPLICETRONICS SOLUTIONS WILL ALLOW YOU TO INCREASE MANUFACTURING PRODUCTIVITY AND REDUCE OPERATIONAL COSTS