

Phone: 514-482-5984

Fax: 514-482-3685

sales@splicetronics.com

www.splicetronics.com



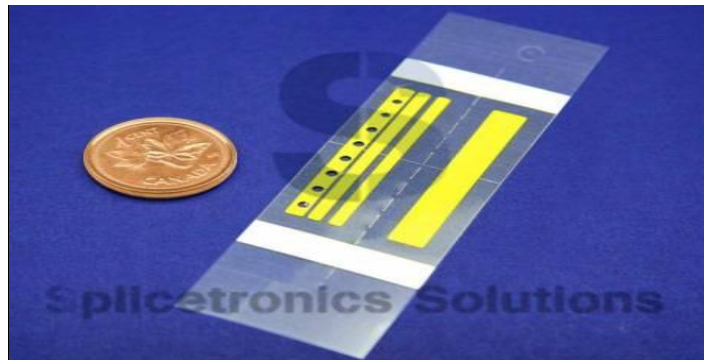
Splicetronics Solutions

Splice Tape is used to join component reels and reduce pick & place machine down-time

Advantages:

- Custom designed with eight hole placement
- Significant savings on production costs
- Increase pick & place machine output 5%-30%
- Reduce reel change down-time
- Guarantees precise connection of reels
- Decrease machine abrasion by reducing the need to reload the feeder

DOUBLE SPLICE TAPE

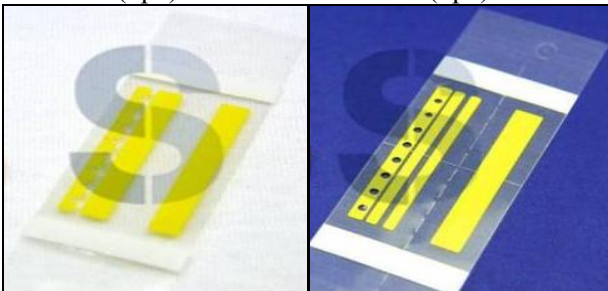


Description:

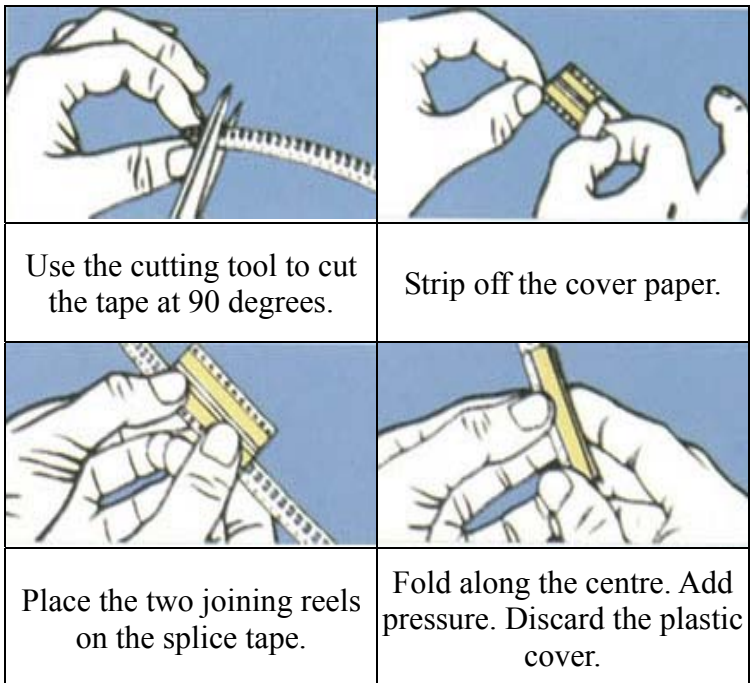
- Sizes: 8mm - 2pc and 3pc card
- Strip Strength: $\geq 300\text{N/M}$
- Extending Rate: 55%
- Fire-retardant: 94v-0 class
- Insulating Resistance: $>10^6$
- Peel Strength: 16N/25mm
- Tensile Strength: 110 N/25mm
- Resist Voltage: 7KV
- Total Thickness: 0.025mm

DSU208 (2pc)

DSU308 (3pc)



Instructions:



P/N	Category	Qty/Unit
DSU208	8mm Double Splice Tape 2pc	500
DSU308	8mm Double Splice Tape 3pc	500

Splicetronics Solutions will allow you increase manufacturing productivity and reduce operational costs