

Phone: 514-482-5984
 Fax: 514-482-3685
 sales@splicetronics.com
 www.splicetronics.com



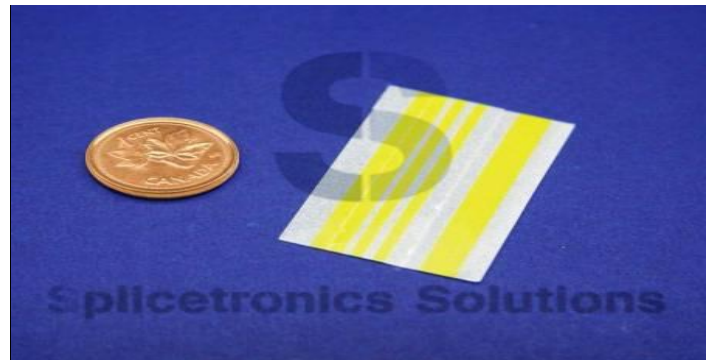
Splicetronics Solutions

Splice Tape is used to join component reels and reduce pick & place machine down-time

Advantages:

- Custom designed for feeders with specific configuration
- Significant savings on production costs
- Increase pick & place output 5%-30%
- Reduce reel change down-time
- Guarantees precise connection of reels
- Decrease machine abrasion by reducing the need to reload the feeder

DOUBLE SPLICE TAPE



Description:

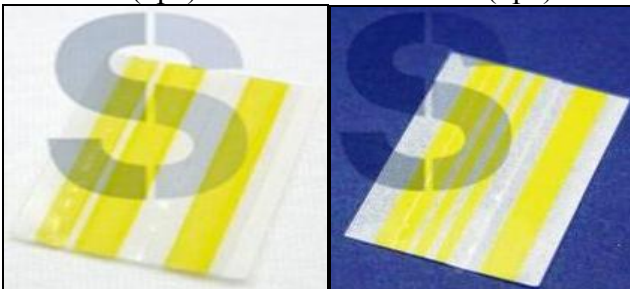
- Sizes: 8mm - 3pc and 4pc card
- Strip Strength: $\geq 300\text{N/M}$
- Extending Rate: 55%
- Fire-retardant: 94v-0 class
- Insulating Resistance: >106
- Peel Strength: 16N/25mm
- Tensile Strength: 110 N/25mm
- Resist Voltage: 7KV
- Total Thickness: 0.025mm

Instructions:

Use the cutting tool to cut the tape at 90 degrees.	Strip off the cover paper.
Place the two joining reels on the splice tape.	Fold along the centre. Add pressure. Discard the plastic cover.

DSX308 (3pc)

DSX408 (4pc)



P/N	Category	Qty/Unit
DSX308	8mm Double Splice Tape 3pc	500
DSX408	8mm Double Splice Tape 4pc	500

Splicetronics Solutions will allow you increase manufacturing productivity and reduce operational costs