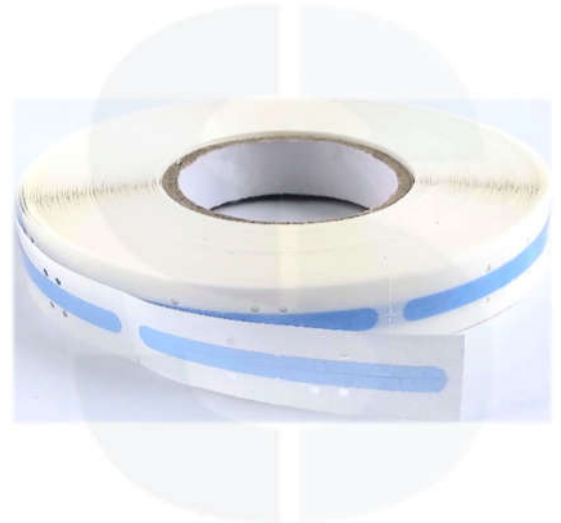




# SINGLE SPLICE TAPE

Splicetronics Solutions

Part (reel)	Dimensions (pc)	Package
SRB08 (8mm)	45mm x 4.8mm	800pcs/roll
SRB12 (12mm)	45mm x 8mm	1000pcs/roll
SRB16 (16mm)	45mm x 12mm	1000pcs/roll
SRB24 (24mm)	45mm x 20mm	1000pcs/roll



## APPLICATION

- Ⓢ Light blue colored strips of PET tape on a roll used to join SMT carrier tapes
- Ⓢ Use with the splice tool and clip to create a stronger connection, especially on larger carrier tapes
- Ⓢ 32mm-44mm available upon request

## ADVANTAGES

- Ⓢ Increase Pick and Place machine output by 5% - 30%
- Ⓢ Reduce reel change downtime
- Ⓢ Decrease machine abrasion by reducing the need to reload the feeder
- Ⓢ Tape strips on a roll for convenience

## INSTRUCTIONS

- Ⓢ Use the cutting tool (CT210/CT410) to accurately cut the carrier tapes.
- Ⓢ Place a splice clip (teeth up) on the splice tool's placement pins.
- Ⓢ Center both carrier tapes (cover tape up) on the pins, and secure with the clamps.
- Ⓢ Crimp the tool handle to connect the carrier tapes.
- Ⓢ Remove the release liner of the splice tape to reveal the adhesive side.
- Ⓢ Add a single strip to the cover tape and press firmly to complete the splice.

