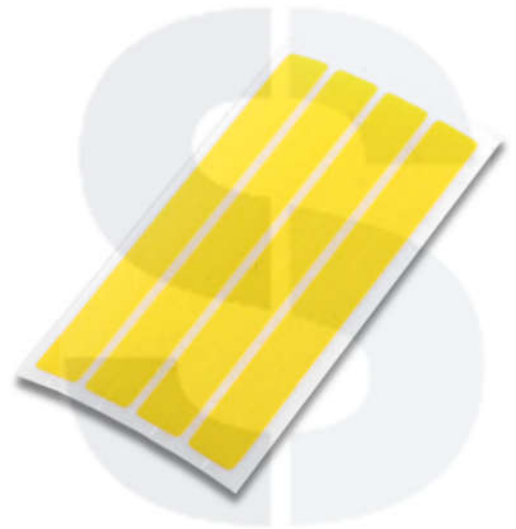




SINGLE SPLICE TAPE

Splicetronics Solutions

Part (reel)	Dimensions (pc)	Package
SS208 (8mm)	45mm x 4.8mm	4000pcs/box
SS112 (12mm)	45mm x 7mm	4000pcs/box
SS116 (16mm)	45mm x 9.5mm	4000pcs/box
SS124 (24mm)	45mm x 17mm	2000pcs/box



APPLICATION

- ☺ Yellow colored strips of PET tape used to join SMT carrier tapes
- ☺ Use with the splice tool and clip to create a stronger connection, especially on larger carrier tapes
- ☺ 32mm-44mm available upon request

ADVANTAGES

- ☺ Increase Pick and Place machine output by 5% - 30%
- ☺ Reduce reel change downtime
- ☺ Decrease machine abrasion by reducing the need to reload the feeder

INSTRUCTIONS

- ☺ Use the cutting tool (CT210/CT410) to accurately cut the carrier tapes.
- ☺ Place a splice clip (teeth up) on the splice tool's placement pins.
- ☺ Center both carrier tapes (cover tape up) on the pins, and secure with the clamps.
- ☺ Crimp the tool handle to connect the carrier tapes.
- ☺ Remove the release liner of the splice tape to reveal the adhesive side.
- ☺ Add a single strip to the cover tape and press firmly to complete the splice.

